

# CHICAGO

## INTERNATIONAL ART, ANTIQUE & JEWELRY SHOW

APRIL 25-28, 2014

Navy Pier / Festival Hall A  
600 East Grand Avenue  
Chicago, IL 60611

**ChicagoSpringShow.com**

Complete form for show entry

To: \_\_\_\_\_

With compliments from: \_\_\_\_\_

*The information below must be completed in full for Show entry.*

Name: \_\_\_\_\_

Company: \_\_\_\_\_

Address: \_\_\_\_\_

City: \_\_\_\_\_

State: \_\_\_\_\_ Zip Code: \_\_\_\_\_

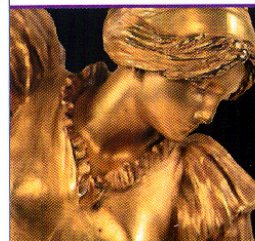
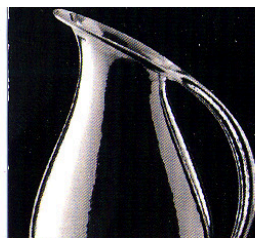
Telephone: \_\_\_\_\_

\*Email: \_\_\_\_\_

*\* To join our mailing list and CollectorsNet.com*



735192



# CHICAGO

## INTERNATIONAL ART, ANTIQUE & JEWELRY SHOW

APRIL 25-28, 2014

A Prestigious Event  
Featuring Over 120 Renowned  
International Exhibitors

Navy Pier  
Festival Hall A  
600 East Grand Avenue  
Chicago, IL 60611

**Rehs Galleries, Inc., NYC**

THE WORLD OF ART, ANTIQUES & JEWELRY

## COMPLIMENTARY ONE DAY TICKET FOR TWO

Friday	April 25	11am – 7pm
Saturday	April 26	11am – 7pm
Sunday	April 27	11am – 7pm
Monday	April 28	11am – 4pm

For more information call 561.822.5440

**ChicagoSpringShow.com**

A PALM BEACH SHOW GROUP EVENT